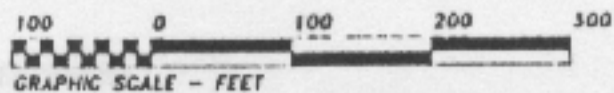
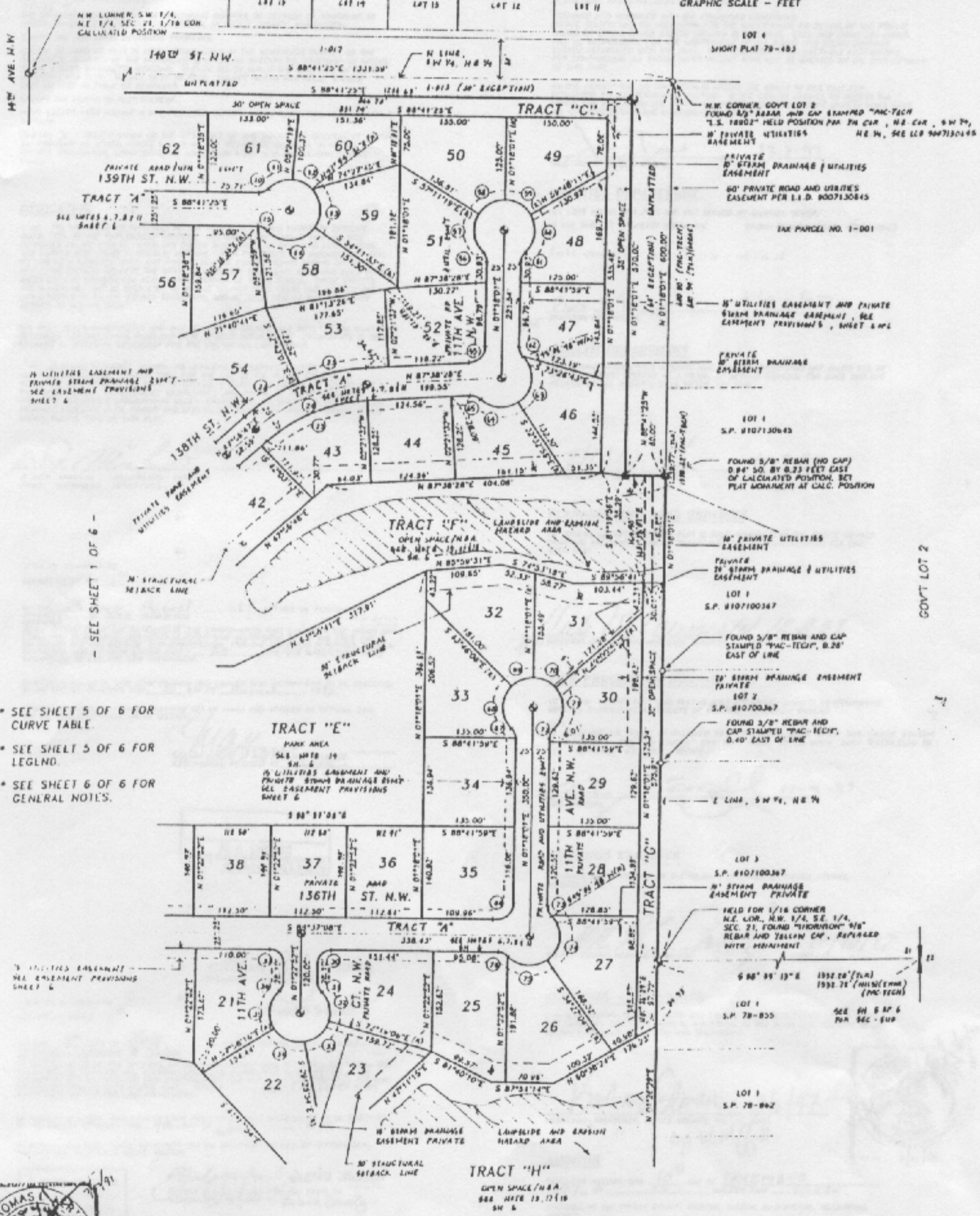


Point Richmond Ridge

A PORTION OF THE S.W. 1/4 OF THE N.E. 1/4 AND THE S.W. 1/4 AND N.W. 1/4 OF THE S.E. 1/4, ALL IN SECTION 21, TOWNSHIP 22 NORTH, RANGE 2 EAST OF THE W.M. PIERCE COUNTY, WASHINGTON



A.P.M. BURNETT'S
PLAT OF RICHMOND RIDGE



N.W. CORNER, S.W. 1/4, NE 1/4 SEC. 21, 1/16 COR. CALCULATED POSITION

LOT 4
SHORT PLAT 79-483

N.W. CORNER, GOVT LOT 2
FOUND 5/8" REBAR AND CAP STAMPED "PAC-TECH
T.S. 18902" HELD POSITION PER 24 CLR, NE CLR, SW 74,
N PRIVATE UTILITIES NE 1/4, SEE LCR 9007130845

PRIVATE
20' STORM DRAINAGE & UTILITIES
EASEMENT
60' PRIVATE ROAD AND UTILITIES
EASEMENT PER L.I.D. 9007130845

TAX PARCEL NO. 1-001

15' UTILITIES EASEMENT AND PRIVATE
STORM DRAINAGE EASEMENT, SEE
EASEMENT PROVISIONS, SHEET 5 AND 6

PRIVATE
20' STORM DRAINAGE
EASEMENT

LOT 1
S.P. 8107130845

FOUND 5/8" REBAR (NO CAP)
0.94' SO. BY 0.73 FEET EAST
OF CALCULATED POSITION. SET
PLAT MONUMENT AT CALC. POSITION

10' PRIVATE UTILITIES
EASEMENT

PRIVATE
20' STORM DRAINAGE & UTILITIES
EASEMENT

LOT 1
S.P. 8107100347

FOUND 5/8" REBAR AND CAP
STAMPED "PAC-TECH", 0.28'
EAST OF LINE

20' STORM DRAINAGE EASEMENT
PRIVATE

LOT 2
S.P. 810700367

FOUND 3/8" REBAR AND
CAP STAMPED "PAC-TECH",
0.40' EAST OF LINE

E LINE, SW 74, NE 74

LOT 3
S.P. 8107100367

10' STORM DRAINAGE
EASEMENT PRIVATE

FIELD FOR 1/16 CORNER
N.E. COR. N.W. 1/4, S.E. 1/4,
SEC. 21, FOUND "HORIZONTAL" 9/8"
REBAR AND YELLOW CAP, REPLACED
WITH MONUMENT

LOT 1
S.P. 78-855

SEE SH 5 & 6
FOR SEC - 500

LOT 1
S.P. 78-862

GOVT LOT 2

- SEE SHEET 5 OF 6 FOR CURVE TABLE.
- SEE SHEET 5 OF 6 FOR LEGEND.
- SEE SHEET 6 OF 6 FOR GENERAL NOTES.

SEE SHEET 1 OF 6

SEE SHEET 3 OF 6



9712100046

T.E.K. Land Surveyor's, LLC
2808 EAST MAIN AVENUE
PUYALLUP, WASHINGTON 98372

JOB NO. 82360
DWG. NO. 82360/PJ

(206) 841-3033